

818-OP/AES

Auto Change Over Unit



The PCO-818 (OP/AES) is engineered to provide backup reliability in a compact, easy to use, and economical package. When inserted in the PCO-818 frame, it's advanced modular design provides a level of flexibility never before available in an Automatic Changeover unit.

Monitor and Auto Switch

The basic function of the PCO-818-OP/AES is to monitor an installation's digital audio signal and automatically switch to a backup audio signal in the event of a failure. It's modular design offers several advantages over traditional automatic changeover units. Monitor only the signals used by the system: no need to pay for monitoring capability that is not required by the system. Install only the modules you need now-add more later.

Reliable Signal Path

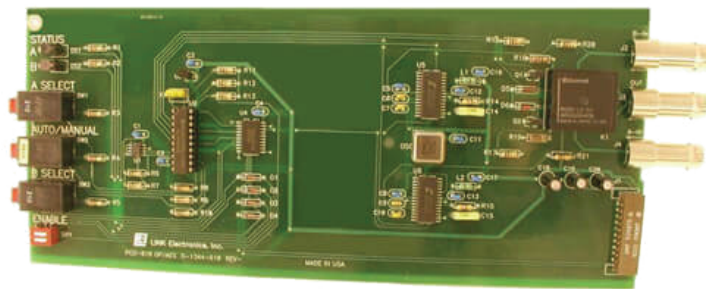
In addition, the 818-OP/AES is designed such that AC mains failure will not erase the memory of it's last generator selection. A dual-coil latching relay provides a reliable signal path even if power is lost to the 818-OP/AES. Meanwhile, its power supply features a "universal" voltage input range of 85VAC to 260VAC. In extreme conditions, the 818-OP/AES would be the last unit to shut down in the event of an AC mains failure.

LED Indicators

Bi-color LEDs provide instant status indication for each signal in your system. If a particular signal is not in use, the LED can be easily de-selected (dark) rather than produce a false failure (red) indication. A "Manual/Automatic" switch allows the user to over-ride the automatic changeover function and select either generator in the system.

Exceptional Technical Support

The 818-OP/AES is backed by the Link Electronics standard 10-year warranty and 24/7 free customer support. It meets the innovative, high performance, flexibility, and reliability requirements of all Link Electronics products. As your system grows and new technology arrives, the PCO-818 series of modules stand ready to grow with you.



818-OP/AES

Auto Change Over Unit



PERFORMANCE:

Standards: AES/EBU, IEC958, S/PDIF, EIAJ CP340/1201
 Connector: BNC
 Signal Level: >400mV
 Input Impedance: >10K Ω on the generator in service
75 Ω on the generator in stand-by
 Amplitude Switch Points: 100mV-200mV
 Crosstalk Between Generators: >60dB @ 3.58MHz
 Reaction Time: <1s

CONTROLS:

Mode Switch: Selects Automatic or Manual operation
 Select Switches: Selects Generator A or Generator B
 Signal Enable Switches: Enables/Disables detection of input signal(s)

ENVIRONMENTAL:

Temperature 0 to 50 C ambient
 Humidity: 10% to 90% non-condensing
 Power: 1 Watt
 AC Line: 85 to 260 VAC , Auto Sensing, in the Chassis

MECHANICAL:

Length: 10.0"
 Width: 4.27"
 Weight: 8 oz.

FRONT PANEL LED INDICATORS:

LED: Generator "A" & "B" Status
 Push-Button Switch: Generator "A", "B" Select & Auto Mode



The manufacture reserves the right to change specifications without notice
 2709 State Hwy 248 Branson, MO 65616
 linkelectronics.com

Phone: (800) 776-4411
 Fax: (573) 204-4554